

Evision Technoserve Pvt.Ltd.



AWS Cloud Practitioner Essentials Course

★ ★ OF THE MONTHS



My Self Arun I had joined evision in Feb 2022 for Associate engineer .and got placed in hcl with in 3months after the full guidance by evision after 6 month again I joined myself in the azure cloud course . And this time I have cleared the interview of two big company of tcs as well as mindtree as a cloud associate engineer at a package of 6 lacs and 7 lacs . This is possible because of evision and my persistent hardwork .

My Self Adarsh . I joined Evision and within 2 month got a job in System Engineer for 3.4 lpa. And also enroll myself in Azure cloud Batch. With the proper guidance of trainers and management, i started studying cloud as well as working. Then after 8 months, I got a job in Azure Cloud Associate Engineer with the package of 6 lpa.This happened because of Evision only.. Thanks alot.



Cloud Engineer
Mindtree Pvt.Ltd.

CTC - 7 LPA
DOJ - 15/05/2023

Want to Switch
your



Let Evision your guide
As Best Career Coach

Azure Administrator
Fidelis Corporate

CTC - 6 LPA
DOJ - 04/05/2023

About Us

The AWS Certified Cloud Practitioner course offers a foundational understanding of AWS Cloud concepts, services, and terminology. This is a good starting point for individuals in non-technical roles with no prior IT or cloud experience or for those with IT experience looking for basic AWS Cloud fluency. The AWS Cloud Practitioner certification can give candidates the confidence to tackle role-based AWS Certifications.



Engineer / Administration (Your Target and Our Commitment)

Industrial - Corporate training

ONLINE - LIVE - CLASSES

This Training Qualifies Individuals for Jobs such as

- AWS Solution Support Engineer
- AWS Administrator

- ★ Live AWS Infrastructure Experience based JOB Preparation
- ★ Evison Modify Resume as Per Requirement of Companies and Profile.

Topic:

- **AWS Administration Module Version 1-1**



Prerequisites (Eligibility Criteria):

- Should have work Experience in Desktop Administrator / Server Administration
- Good Knowledge of Windows Server Service / Linux Server Service
- Networking Fundamentals, including TCP/IP -Client / server Architect Concept.
- Windows Server Service including Group Polides , DNS , DHCP , RIS Backup.
- Deploying, configuring, and troubleshooting windows-Based Computers
- Good Knowledge of VMWare / Hyper V(Virtualization) technology
- Concept of Disaster Recovery, High Availablity, Managed Service, Datacenter
- IP schemes & Classes, Routing Tables, VPN , LAN, firewalls, NAT, Gateways

Note:

1. 100 % Hand on Practical Module (All LAB will be on Scenario and Case Study Based)
2. Resume Modification & Interview Preparation for AWS Administrator Profile.
3. Each Trainee Will Get Individual Attention for Complete Hand on Practice.
4. Each Topic Assignment and Project will be mandatory to complete for every trainee.
5. Guaranteed Placement Total Fee: Rs. 24,190 /- (inclusive 18% GST)

Registration fees: Rs. 1,180/- || 1st Instalment: Rs. 5,310/- || 2nd Instalment: Rs. 5,900/-

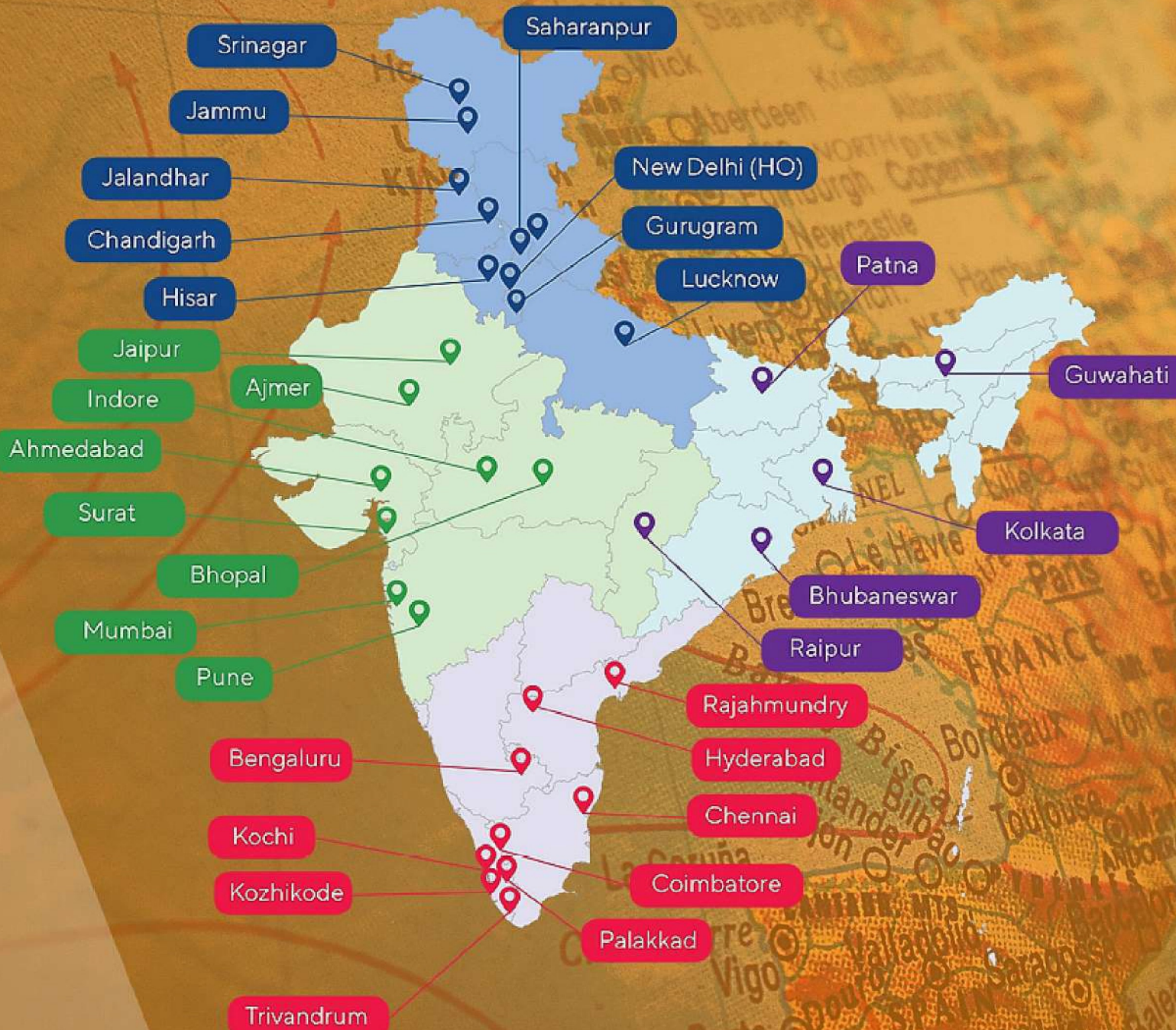
After Job Confirmation: **11,800 Rs.**

Classes Available On Weekends (Every Sat-Sun): Duration 4 Months

OUR PAN INDIA PRESENCE

Access Online Job Internship

Any Door Steps Across India on Live With **Zoom** and **Skype**



What will you get in this course?



High-Quality
Online Training



Online Technical
Mentor Support



Certification
exam Prep



AWS Cloud Pravritioner
Certification Exam



AWS certification & digital
badge at the end of the
training

Course Description

The AWS Certified Cloud Practitioner Course is the starting point for anyone looking to understand Cloud Computing. This program is eligible for both technical and non-technical professionals that want to launch a career in Cloud Computing or simply understand it to contribute to their day-to-day organizational operations.

Cloud Practitioners will build basic cloud solutions using AWS services. You will learn about AWS Cloud concepts, security concepts, common use cases, billing and pricing models and business impacts.

Duration - 4 Months (Weekends Only)

Mode of learning - Online Training (Live lectures & technical mentor support)

What are the requirements to join?



Why Sign Up for the AWS Certified Cloud Practitioner Course?

Many companies realize the ever-evolving Amazon Web Services (AWS) cloud computing platform offers a wide selection of services that drive innovation, enable scalability, and maximize IT spending.

If you have little to no experience with AWS, this course is designed to help you obtain the knowledge and skills required to become an AWS Certified Cloud Practitioner. By taking this course, you will gain an understanding of key AWS technologies, their use cases, and the costs and benefits of working with AWS Cloud environments.

Become an AWS Certified Cloud Practitioner | No prior experience in programming is required.

Evision Technoserve Pvt. Ltd.



Prerequisites

- Basic knowledge of Python programming language would be beneficial.
- Basic knowledge on Linux and windows
- Basic coding knowledge on any software programming language

Audience

- Anyone functioning in Operations or Development/ Engineering teams can choose for a career in DevOps.
- Of course, IT Professionals too.



+8800015881
+8800015882



www.evisiontechnoserve.com

Course Curriculum

Architecting on AWS

Module 1 - Overview of AWS

1. What are Amazon AWS, AWS Pre Requisites, Strategy of Success.
2. AWS Certification Tracks.
3. What is Cloud Computing, Cloud Computing Models (IAAS, PAAS, SAAS)
Types of Clouds, Datacenter in a Container.
4. Types of Clouds. (Private, Public, Hybrid)
5. Understanding AWS Global infrastructure. Regions, Availability Zones.
6. AWS Edge Locations, Edge Cache. How to Select a best Region.
7. Sign-Up for AWS Services. A visit to AWS Control Panel.
8. AWS Services and Terminologies.

Module 2 - AWS Compute Service

1. AWS Free Tier, Launch Your first EC2 instance. Windows OS AWS Free Tier, Launch Your first EC2 instance. Linux OS. EC2 instance Families and Types
2. EC2 Tenancy Models, Shared instance, Dedicated Instance, Dedicated Host.
3. Understanding EC2 EBS Volume Backup, Snapshot.
4. Change EC2 instance Type. (Upgrade/Downgrade)- Resize EC2 EBS Backed Instance
5. EC2 instance Full Backup: Create AMI from EC2 instance. Launch EC2 instance from AMI. Create Image From a snapshot
6. Ephemeral Storage, EBS Backed vs Instance Store Backed EC2 instance (Temporary Storage).
7. AWS Bastion Host.



+8800015881
+8800015882



www.evisiontechnoserve.com

8. Security Options in AWS, Understanding Security Group
9. Managing and administration of Security Group with EC2 instance and secure your server. (LAB)
10. Calculating EC2 instance Pricing. Pricing Models. On Demand, Reserved, Spot instance

Module 3 - AWS VPC (Network Service)

1. Understanding Virtual Private Cloud (VPC)_Part1 (Concept in-depth)
2. Understanding Virtual Private Cloud (VPC)_Part2 (Use Cases)
3. Understanding Virtual Private Cloud (VPC)_Part3 (LAB1)
4. Understanding Virtual Private Cloud (VPC)_Part3 (LAB2)
5. Understanding Virtual Private Cloud (VPC)_Part4 (EC2-Classic, EC2-VPC) Understanding Access Control List (ACL's) in VPC.
6. Working with Access control list (ACL's) usage and real-world scenarios with LABS.
7. Elastic Network Interface. (ENI).EC2 instance multiple IP's.
8. Type of IP Addresses in AWS, Private IP Address, Public IP Address and Elastic IP Address.
9. Elastic IP Address allocation, association with EC2 instance. EIP Pricing. (LAB)
10. AWS Virtual Private Gateway (VPG). Site to Site VPN- (Connect your VPC with on-Premise Network over VPN)
11. VPC Endpoint for S3, S3 Private access
12. Working with VPC Peering

Module 4 - AWS EBS and EFS

1. AWS Cloud Storage Services. Understanding EBS (Elastic Block Storage)
2. EBS Volume Types.



+8800015881
+8800015882



www.evisiontechnoserve.com

3. Elastic Block Storage (EBS)_ EBS Working with Windows OS.
4. Elastic Block Storage (EBS)_ EBS Working with Linux OS.
5. Understanding EFS (Elastic File System).
6. Understanding EC2 EBS Volume Backup, Snapshot
7. Understanding EBS snapshots (incremental) working. Snapshot deletion
8. Working with EBS Snapshot (LAB).
9. Elastic File System (EFS) configuration with Linux EC2 instance.

Module 5 - AWS S3

1. Understanding Simple Storage Service (S3)
2. Managing, Configuring S3 Bucket, Accessing S3 Service.
3. Host and accessing a Static Web Site on S3.
4. Web Site Redirection Using S3 Bucket.
5. S3 Bucket, Object Versioning. Bucket Policy Generator. Cross Account S3 access using Bucket Policy, Server Access Logging.
6. S3 Events, Storage Class, Objects Life Cycle.
7. AWS Glacier Storage Service. Archive Data.
8. AWS S3 to Glacier Transition, Retrieve Data from Glacier to S3 and Glacier Vault.
9. TAG S3 bucket, Requester Pay, S3 Pricing factors, Transfer Acceleration, Cross Region Replication LAB.

Module 6 - AWS IAM

1. Identity and Access Management. (IAM). _Part1
2. Identity and Access Management. (IAM). _Part2

Module 7 - AWS Load Balancer

1. Elastic Load Balancing. (ELB).
2. Configuring Elastic Load balancer. (LAB)
3. Route Traffic to a particular Target Group Using Application ELB.



+8800015881
+8800015882



www.evisiontechnoserve.com

Module 8 - AWS Auto Scaling

1. Understand AWS Auto Scaling Group (ASG).
2. ASG Components, Launch Configuration, Scaling Plans.
3. Configure ASG with Single EC2 instance. LAB_ (For Fault Tolerance) Keep initial group Size.
4. Auto Scaling Group with Multiple EC2 instances, Integrate with ELB. Custom Scaling Policy, Health Check Types. (LAB)
5. Autoscaling Concept Review Exam Points, Scaling Methods, Scheduled Scaling, AS Process Suspend.

Module 9 - AWS Mail Service

1. AWS SMTP Service Email Relay- Simple Email Service (SES).

Module 10 - AWS Database Service

1. RDS DB Instance, DB Security, DB instance Class. DB instance Storage.
2. Provisioning an RDS Instance. (MS SQL) and connect over internet.
3. RDS Multi AZ deployment, Read Replicas, Backup Restore.
4. DB instance Modification. Amazon ElastiCache

Module 11 - AWS Business Applications

1. Email Services- AWS Work Mail. (Host your custom domain mailing services on AWS)

Module 12 - AWS Monitoring

1. Cloud Watch, how it Works, Alarms, Notification, EC2 Action, EC2 Status Check, Monitoring.
2. Custom Metric Monitoring, Memory/Disk Utilization. (Using Scripts).
3. Cloud Watch-Windows EC2 disk space utilization monitoring using Power Shell script.



+8800015881
+8800015882



www.evisiontechnoserve.com

4. Cloud Watch Log Agent- Monitor Log Files.

Module 13 - AWS Route53 (DNS Service)

1. Route 53 _ Functions and Working.
2. Access S3 Bucket Using Route 53 DNS Name.
3. Route 53 Weighted Routing Policy.
4. Route 53 Latency Routing Policy (LBR).
5. Route 53 Failover Routing Policy.
6. Route 53 Geolocation Routing Policy.
7. Route 53 CNAME vs Alias Record.

Module 14 - AWS VPS

1. AWS LightSail (VPS).
2. AWS Shared Security Responsibility Model. (Exam Questions)

Module 15 - AWS CERTIFICATE

1. Create ACM-integrated SSL Certificate to run SSL Website.
2. Use ACM certificate with App ELB and run Website over HTTPS (SSL).

Module 16 - LAMP Stack on AWS

1. AWS EC2 User Data, install LAMP Server
2. Cloud Front and CDNs
3. AWS Tagging Billing, Payment information.



+8800015881
+8800015882



www.evisiontechnoserve.com

Linux Modules

Module 1 - Understanding Linux Concepts

1. What is Linux?
2. Everyday use of Linux
3. Unix vs. Linux

Module 2 - Download, Install and Configure

1. What is Oracle Virtual Box?
2. Downloading and Installing Oracle Virtual Box
3. Creating virtual machine
4. Linux Distributions
5. Different way to install Linux
6. Downloading and Installing Linux (CentOS)
7. Redhat Linux installation (Optional)
8. Linux Desktop (GUI)
9. Virtual Machine Management
10. Linux vs. Windows
11. Who Uses Linux in Cloud Administration

Module 3 - System Access and File System


1. Accessing Linux system
2. Download and install Putty
3. Connect Linux VM via Putty
4. Important Things to Remember in Linux
5. Introduction to File System
6. File system structure description
7. File system navigation commands



+8800015881
+8800015882



www.evisiontechnoserve.com

- 
8. File System Paths
 9. Directory listing overview
 10. Creating Files and Directories
 11. Finding Files and Directories (find, locate)
 12. Changing Password
 13. Wildcard (*, \$, ^)
 14. Combining and Splitting Files (cat and cut)
 15. Soft and Hard Links (ln)

Module 4 - Linux Fundamentals

1. Commands Syntax
2. File Permissions (chmod)
3. File Ownership (chown, chgrp)
4. Getting Help (man, whatis etc.)
5. TAB completion and up arrow keys
6. Adding text to file
7. Pipes (|)
8. File Maintenance Commands
9. File Display Commands
10. Filters / Text Processing Commands (cut, sort, grep, awk, uniq, wc)
11. Compare Files (diff, cmp)
12. Compress and Un-compress files/directories (tar, gzip, gunzip)
13. Combining and Splitting Files
14. Linux vs. Windows Commands

Module 5 - System Administration

1. Linux File Editors (vi text editor)
2. sed Command



+8800015881
+8800015882



www.evisiontechnoserve.com

3. User account management
4. Switch users and Sudo access
5. Monitor users
6. Talking to users (users, wall, write)
7. Linux Directory Service – Account Authentication
8. Difference between Active Directory, LDAP, IDM, WinBIND, OpenLDAP etc.
9. System utility commands (date, uptime, hostname, which, cal, bc etc.)
10. Processes and schedules (systemctl, ps, top, kill, crontab and at)
11. Process Management
12. System Monitoring Commands (top, df, dmesg, iostat 1, netstat, free etc.)
13. OS Maintenance Commands (shutdown, reboot, halt, init etc.)
14. Changing System Hostname (hostnamectl)
15. Finding System Information (uname, cat /etc/redhat-release, cat /etc/*rel*, dmidecode)
16. System Architecture (arch), Terminal control keys
17. Terminal Commands (clear, exit, script)
18. Recover root Password (single user mode)
19. SOS Report

Module 6 - Shell Scripting

1. Linux Kernel
2. What is a Shell?
3. Types of Shells
4. Shell scripting
5. Basic Shell scripts
6. If-then scripts



+8800015881
+8800015882



www.evisiontechnoserve.com

Module 7 - Networking, Servers and System Updates

1. Enabling internet in Linux VM
2. Network Components
3. Network files and commands (ping, ifconfig, netstat, tcpdump, networking config files)
4. NIC Information (ethtool)
5. NIC or Port Bonding
6. Downloading Files or Apps (wget)
7. curl and ping Commands
8. File Transfer Commands
9. System updates and repositories (rpm and yum)
10. System Upgrade/Patch Management
11. Create Local Repository from CD/DVD
12. Advance Package Management
13. SSH and Telnet
14. DNS
15. Hostname and IP Lookup (nslookup and dig)
16. NTP
17. chronyd (Newer version of NTP)
18. Sendmail
19. Apache Web Server (http)
20. Central Logger (rsyslogd)
21. Securing Linux Machine (OS Hardening)
22. OpenLDAP Installation

Module 8 - Disk Management and Run Levels


1. System run levels
2. Linux Boot Process



+8800015881
+8800015882



www.evisiontechnoserve.com

- 
3. Message of the Day
 4. Disk partition (df, fdisk, etc.)
 5. Storage
 6. Logical Volume Management (LVM)
 7. LVM Configuration during Installation
 8. Add Disk and Create Standard Partition
 9. Add Disk and Create LVM Partition
 10. LVM Configuration during Installation
 11. Add Virtual Disk and Create New LVM Partition
(pvcreate, vgcreate, lvcreate,)
 12. Extend Disk using LVM
 13. Adding Swap Space
 14. RAID

Devops Topic:

1. Code Commit.
2. Incident Response - AWS GuardDuty
3. Infrastructure Security - AWS Shield
4. Logging & Monitoring - Understanding AWS WAF
5. Understanding of bug tracking, issue tracking, and project management
6. Using JIRA and Confluence tool.



+8800015881
+8800015882



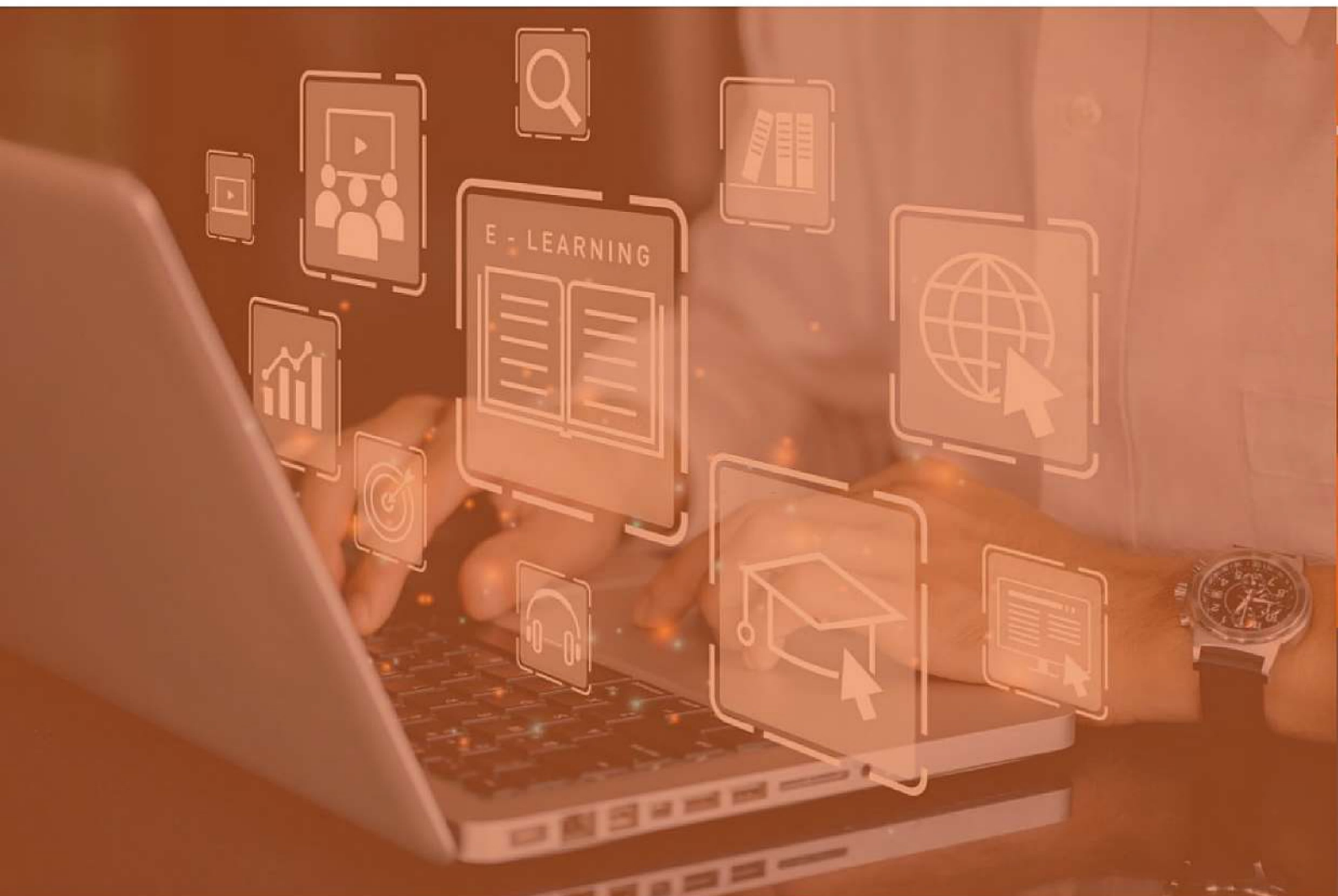
www.evisiontechnoserve.com

Learning outcomes

In this course, you'll learn:

- The foundations of cloud computing
- The core AWS services, including cloud computing, network, databases, and storage
- Security best practices and compliance in the AWS Cloud
- The cloud costs, economics, and billing practices of the AWS Cloud

By the end of this course, you'll understand AWS services and how they are leveraged to build applications and provide products and services in the real world.



 E-41, Sector 3, Noida, Uttar Pradesh, 201301

Branch Office

44/8, Puttenahalli, JP Nagar
Bengaluru 560078

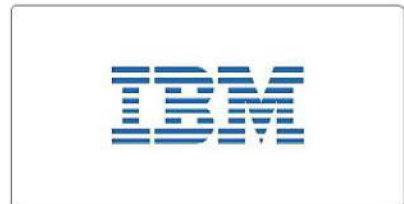
Branch Office

Yashwant Complex, Mundhwa
Pune, Maharashtra 411036



Our Clients

Who Makes Us Proud





Evision Technoserve Pvt. Ltd.

NOIDA, HEAD OFFICE

Address

**E-41 Sector 3, Opp. HCL Technologies,
Noida, Uttar Pradesh, 201301.**

 **+ 91-9811722065**

BENGALURU BRANCH

Address

**44/8, Puttenahalli, JP Nagar,
Bengaluru 560078**

 **+91-9811722023**

PUNE BRANCH

Address

**Yashwant Complex, Mundhwa,
Pune, Maharashtra 411036**

 **+91-9811722022**



Scan Me

CAREER CONSULTING TO PROPEL YOUR CAREER
We Help You To Get Hired
We've helped over 10,000 people land their dream jobs.
Let our job search strategies take you from resumes to better days.



CHECK OUR SUCCESS STORY
ON
YOUTUBE CHANNEL.

**SCAN
ME**

Scan Me

Join Our 45 Days Placement Oriented
Program to get your first
dream JOB in IT



Get Online Registered with Us
by Scan QR Code